

# Integrated Solar LED Street Lights

**ENELTEC**<sup>®</sup>  
brighten your ideas



Integrated Solar LED Street Lights with "ALL-IN-ONE" technology, which integrates a highly efficient solar panel, super bright LED, compact LiFePO4 lithium battery, motion sensor and a smart power management system into a cabinet to achieve features such as easy to install, long lifespan and environmental friendly.

## Features and Benefits



**ALL-IN-ONE** solar light is the most convenient design for transportation, installation and maintenance.



Fully recyclable LiFePO4 batteries are half weight and size of lead acid and offering as much as 10 times the cycle life.



Bracket and security bolts protect the light from steal and violence damage.



**BRIDGELUX** latest and highest performance LED to achieve 110lm/W @85°C.

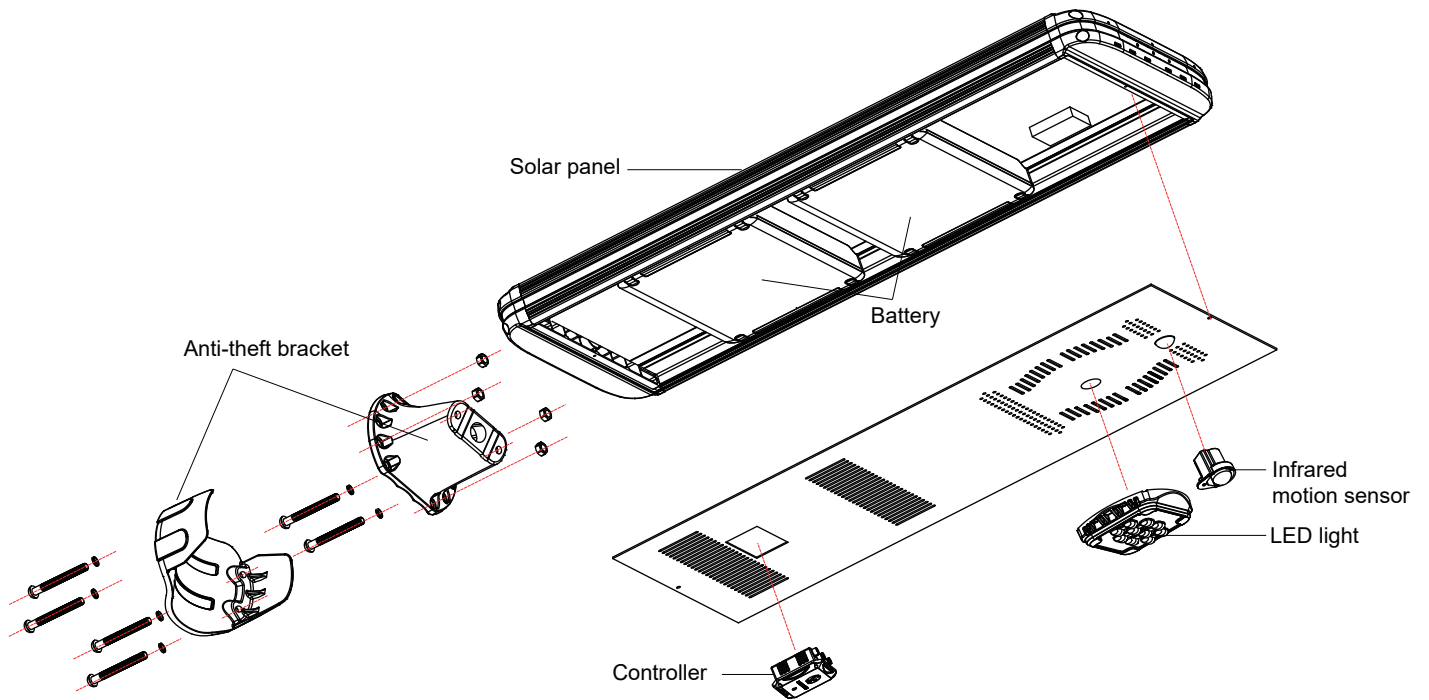


A built-in PIR sensor regulates the light output between full brightness and DIM mode depending upon the detection of movement for saving energy.

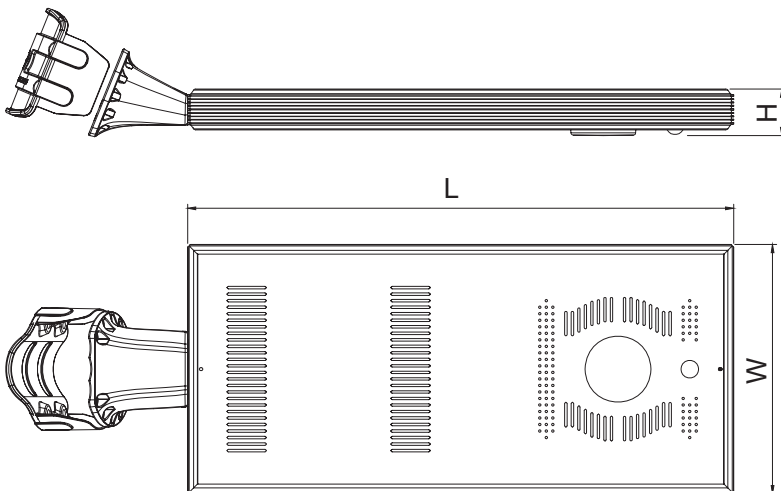


The manufacturer has certificated ISO9000/ISO14000 and products passed CE, ROHS, IP65, loading test, etc.

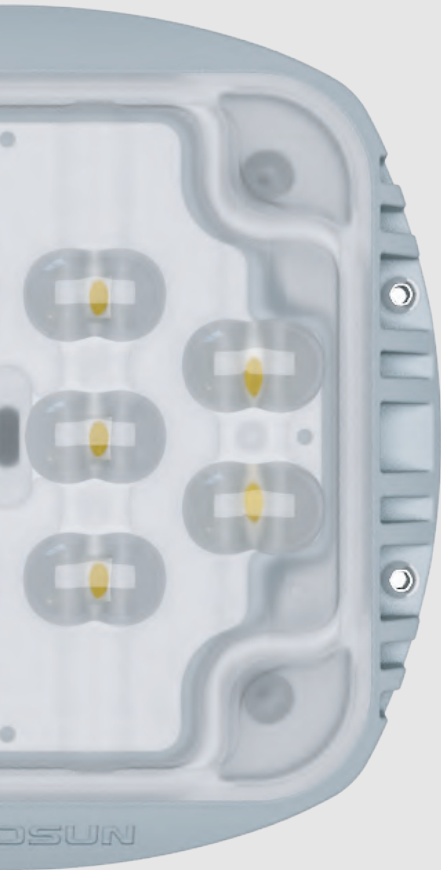
# Structure



# Dimension



Model No.	Dimension (mm)		
	L	W	H
ENSL-1006-05C	380	220	50
ENSL-1508-05C	380	290	40
ENSL-1812-05C	380	290	40
ENSL-2015-05C	480	360	50
ENSL-3018-05C	650	325	35
ENSL-5020-05C	960	340	45
ENSL-5025-05C	960	340	45
ENSL-6530-05C	1210	340	45
ENSL-6540-05C	1210	340	45
ENSL-7050-05C	1210	460	45
ENSL-8550-05C	1210	460	45
ENSL-8560-05C	1210	460	45
ENSL-9070-05C	1210	460	45
ENSL-10080-05C	1210	460	45
ENSL-2008-05	480	360	50
ENSL-2512-05	480	360	50
ENSL-3015-05	600	380	50
ENSL-6530-05	1210	340	45
ENSL-7040-05	1210	340	45
ENSL-8550-05	1210	460	45
ENSL-8560-05	1210	460	45
ENSL-9070-05	1210	460	45
ENSL-10080-05	1210	460	45



## BRIDGELUX LED

Adopted BRIDGELUX LED with average light illumination of 110lm @350mA, 85°C.

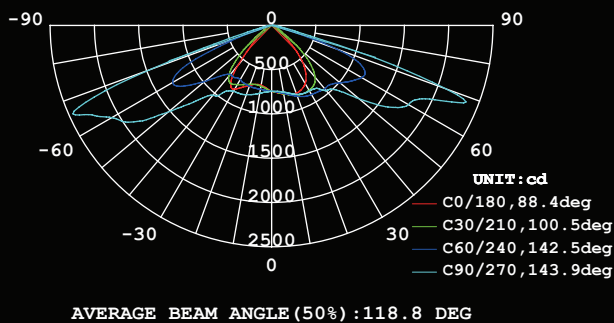
## Bat wing light distribution

Leadsun new design light distribution lens widely improve illumination effect.

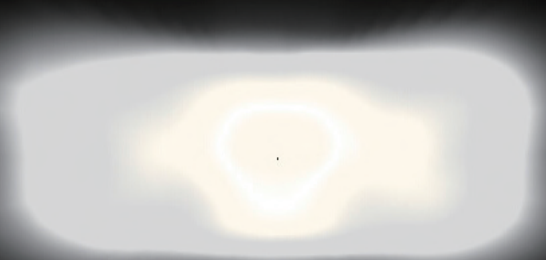
Compared with the last generation product, illumination area enlarge **40%** more, and illumination uniformity does improve up to **200%**.



Bat wing light distribution curve

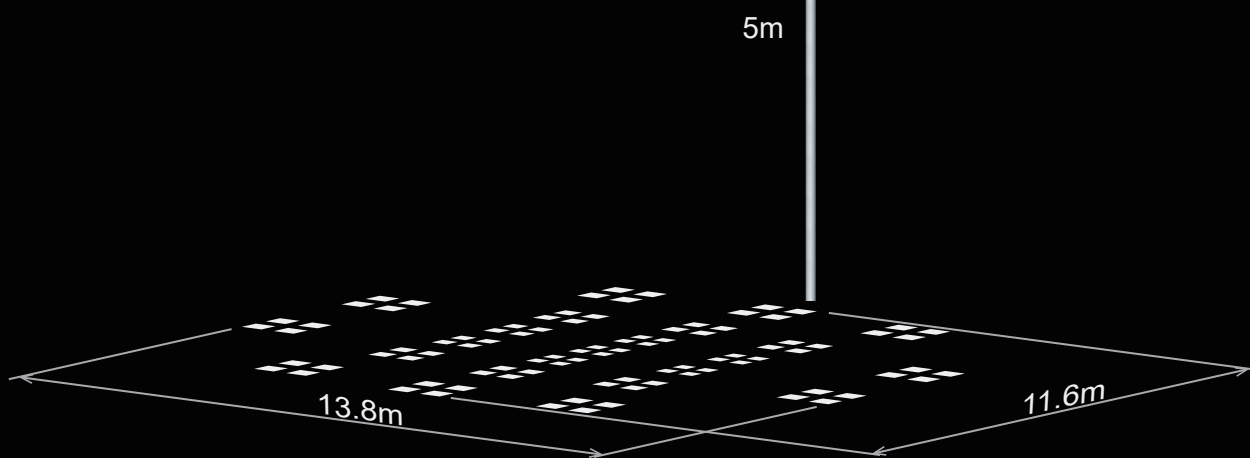


Light intensity diagram



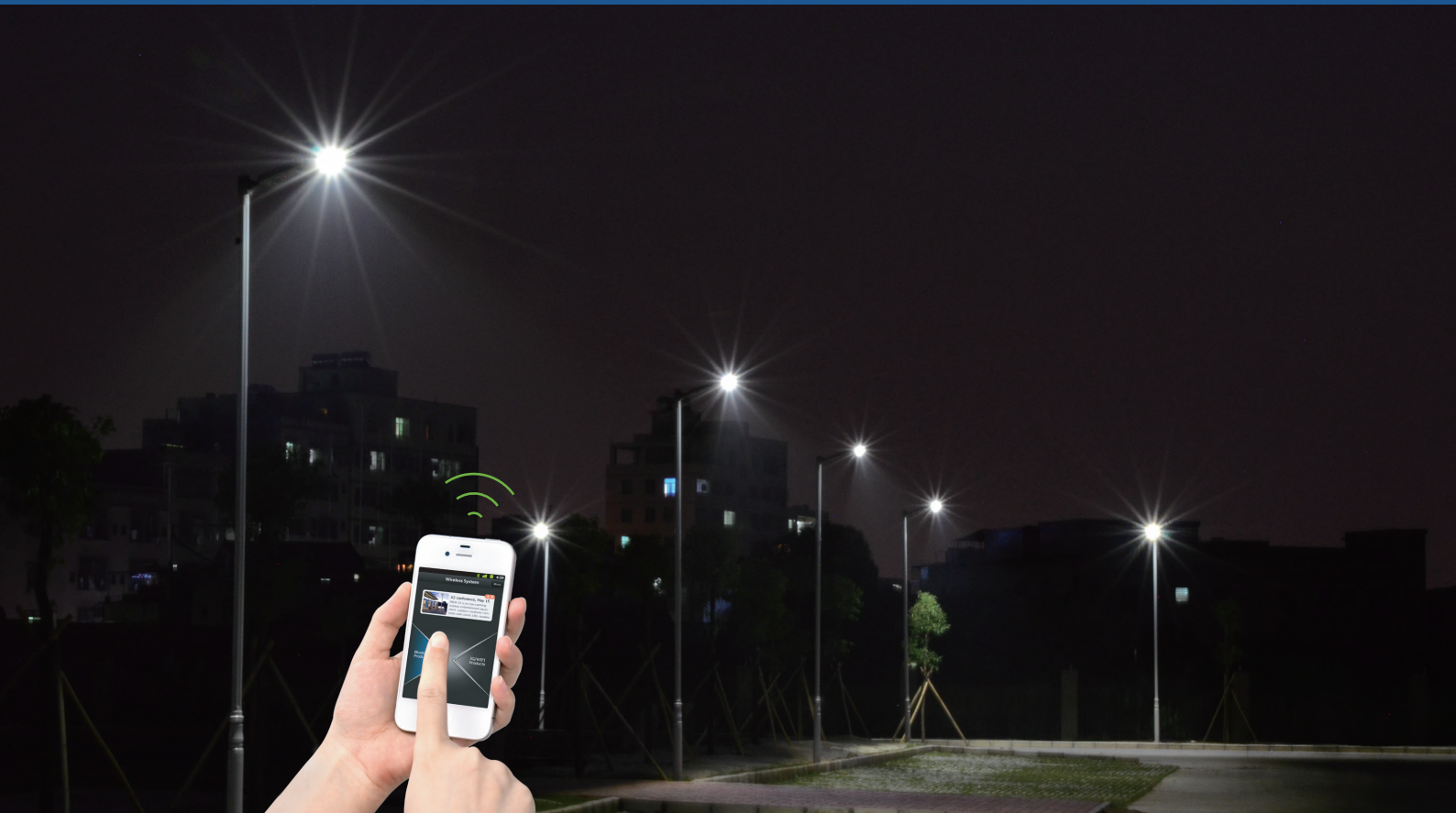
# Motion detection

Integrated Solar LED Street Lights comes complete with built-in motion detection system that automatically regular the light soure from full bright (100%) to the energy saving output (30%) to increase battery autonomy.



Infrared motion sensor detection area

# APP Control



## Control the light

---

Turn ON or turn OFF the light and change light intensity in the range of 10% to 100%.

## Track historical data

---

Review monthly report to track every day's power generation, inner temperature and detail records for charging and discharge.

## Set custom working mode

---

Users can set their own working mode according to the local solar irradiance or peak sun hours and other lighting requirement.

## Real-time supervision

---

Monitor the status of main components and real time charging / discharging data.

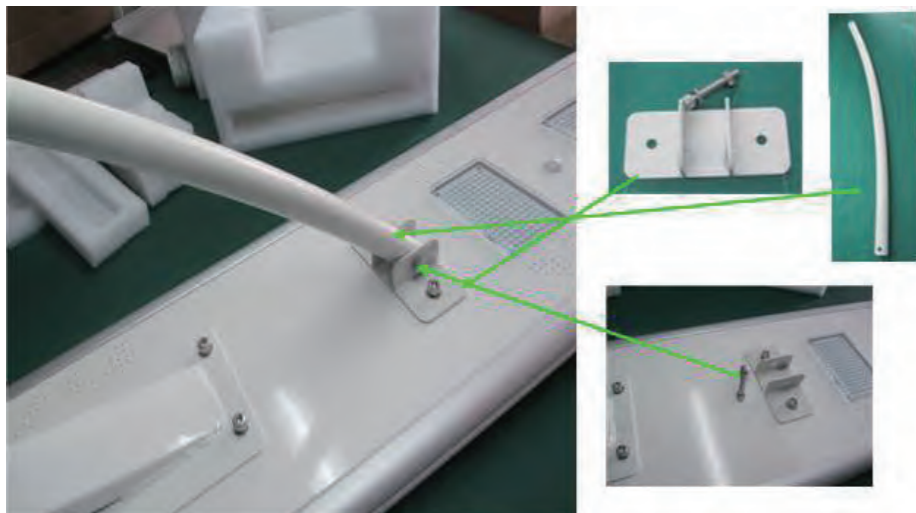
# Assembling and Installation



Step 1: Open the box and prepare all the parts you need.



Step 2: Unscrewing the screw of the light fixture/box for installing bracket.

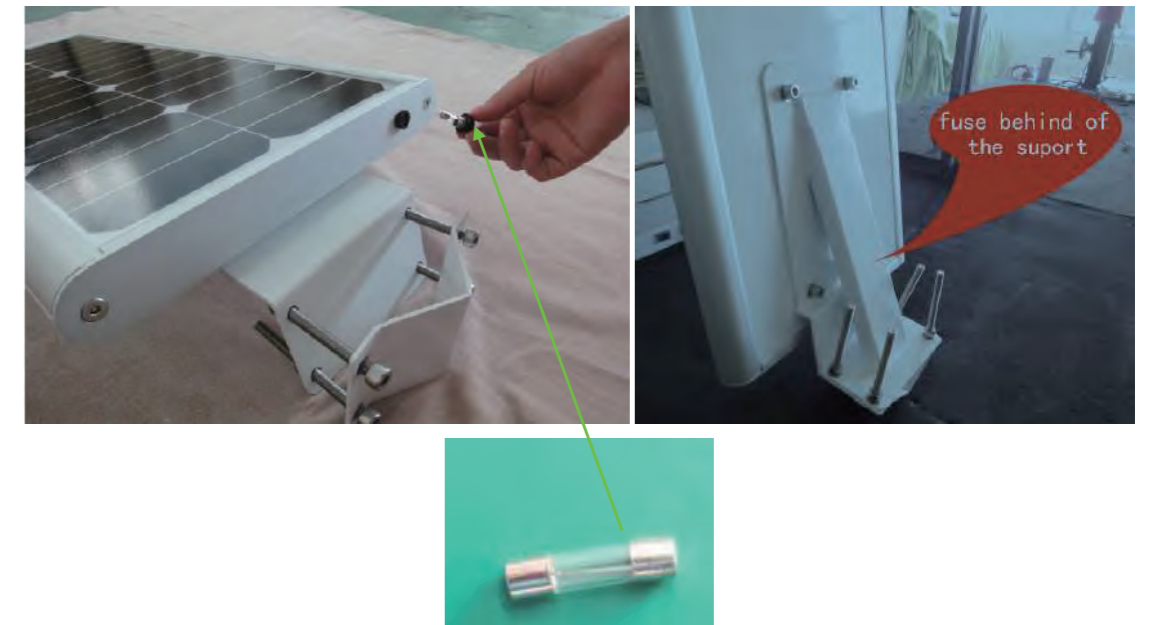


Step 3: Screw and hold one end of the mounting support tube to the light fixture/box.

Step 4: Connect the pole mount bracket with the support tube.



Step 5: Insert the fuse into the light fixture/box. Unfold the knob of fuse (see below) and take out the insulating film of the fuse socket. Make sure the fuse is working, then tighten.



Step 6: Mount the light fixture/box on the pole.



Model No.	ENSL-1006-05C	ENSL-1508-05C	ENSL-1812-05C	ENSL-2015-05C	ENSL-3018-05C	ENSL-5020-05C	ENSL-5025-05C	ENSL-6530-05C	ENSL-6540-05C	ENSL-7050-05C	ENSL-8550-05C	ENSL-8560-05C	ENSL-9070-05C	ENSL-10080-05C	ENSL-2008-05	ENSL-2512-05	ENSL-3015-05	ENSL-6530-05	ENSL-7040-05	ENSL-8550-05	ENSL-8560-05	ENSL-9070-05	ENSL-10080-05
LED Power	6W	8W	12W	15W	18W	20W	25W	30W	40W	50W	50W	60W	70W	80W	8W	12W	15W	30W	40W	50W	60W	70W	80W
Solar Module Type	Solarword Monocrystal linesilicon	Solarword Monocrystal linesilicon	Solarword Monocrystal linesilicon	Solarword Monocrystal linesilicon	Solarword Monocrystal linesilicon	Solarword Monocrystal linesilicon	Solarword Monocrystal linesilicon	Solarword Monocrystal linesilicon	Solarword Monocrystal linesilicon	Solarword Monocrystal linesilicon	Solarword Monocrystal linesilicon	Solarword Monocrystal linesilicon	Solarword Monocrystal linesilicon	Solarword Monocrystal linesilicon	Solarword Monocrystal linesilicon	Sunpower Monocrystal linesilicon	Sunpower Monocrystal linesilicon	Sunpower Monocrystal linesilicon	Sunpower Monocrystal linesilicon	Sunpower Monocrystal linesilicon	Sunpower Monocrystal linesilicon	Sunpower Monocrystal linesilicon	Sunpower Monocrystal linesilicon
Solar Module (W)	10W 18V	15W 18V	18W 18V	20W 18V	30W 18V	50W 18V	50W 18V	65W 18V	65W 18V	70W 18V	85W 18V	85W 18V	90W 18V	100W 18V	20W 18V	25W 18V	30W 18V	65W 18V	70W 18V	85W 18V	85W 18V	90W 18V	100W 18V
Lumen (lm)	600-700	900-950	1200-1280	1500-1580	1600-1700	2100-2200	2500-2700	3000-3300	4000-4300	5000-5300	5500-6000	6500-7000	7500-8000	8500-9000	900-950	1200-1280	1500-1580	3000-4000	4500-5500	6000-7000	6500-7500	7500-8000	8500-9000
Lithium Battery	4AH 12V	6AH 12V	7AH 12V	10AH 12V	13AH 12V	17AH 12V	18AH 12V	26AH 12V	26AH 12V	36AH 12V	44AH 12V	44AH 12V	50AH 12V	60AH 12V	9AH 12V	10AH 12V	13AH 12V	30AH 12V	36AH 12V	44AH 12V	44AH 12V	50AH 12V	60AH 12V
Working Time In Raining days	3-4 Days	3-4 Days	3-4 Days	3-4 Days	3-4 Days	3-4 Days	3-4 Days	3-4 Days	3-4 Days	3-4 Days	3-4 Days	3-4 Days	3-4 Days	3-4 Days	3-4 Days	5-7 Days	5-7 Days	5-7 Days	5-7 Days	5-7 Days	5-7 Days	5-7 Days	5-7 Days
Constant Worktime at Full Power	>12 Hours	>12 Hours	>12 Hours	>12 Hours	>12 Hours	>12 Hours	>12 Hours	>12 Hours	>12 Hours	>12 Hours	>12 Hours	>12 Hours	>12 Hours	>12 Hours	>12 Hours	>12 Hours	>12 Hours	>12 Hours	>12 Hours	>12 Hours	>12 Hours	>12 Hours	>12 Hours
Worktime at Energy-saving Mode (20-30%)	>48 Hours	>48 Hours	>48 Hours	>48 Hours	>48 Hours	>48 Hours	>48 Hours	>48 Hours	>48 Hours	>48 Hours	>48 Hours	>48 Hours	>48 Hours	>48 Hours	>48 Hours	>48 Hours	>48 Hours	>48 Hours	>48 Hours	>48 Hours	>48 Hours	>48 Hours	>48 Hours
Charge Time	7 Hours	7 Hours	7 Hours	7 Hours	8 Hours	8 Hours	8 Hours	8 Hours	8 Hours	8 Hours	8 Hours	8 Hours	8 Hours	8 Hours	8 Hours	7 Hours	7 Hours	7 Hours	8 Hours	8 Hours	8 Hours	8 Hours	8 Hours
Switch Lights Sense Threshold	10LUX	10LUX	10LUX	10LUX	10LUX	10LUX	10LUX	10LUX	10LUX	10LUX	10LUX	10LUX	10LUX	10LUX	10LUX	10LUX	10LUX	10LUX	10LUX	10LUX	10LUX	10LUX	10LUX
Working Temperature	-30℃~60℃	-30℃~60℃	-30℃~60℃	-30℃~60℃	-30℃~60℃	-30℃~60℃	-30℃~60℃	-30℃~60℃	-30℃~60℃	-30℃~60℃	-30℃~60℃	-30℃~60℃	-30℃~60℃	-30℃~60℃	-30℃~60℃	-30℃~60℃	-30℃~60℃	-30℃~60℃	-30℃~60℃	-30℃~60℃	-30℃~60℃	-30℃~60℃	-30℃~60℃
Installation Height	3M	3-4M	3.5-4.5M	4-5M	4-5M	4-5M	4.5-5.5M	5-6M	6-7.5M	7-9M	7-9M	7-9M	8-10M	8-10M	3-4M	3.5-4.5M	4-5M	5-6M	6-7.5M	7-9M	7-9M	8-10M	8-10M
Pole Distance	8-10M	10-12M	12-14M	14-17M	16-20M	17-21M	18-22M	17-25M	25-27M	27-30M	27-30M	30-35M	35-36M	36-38M	10-12M	12-14M	14-17M	17-25M	25-27M	27-30M	30-35M	35-36M	36-38M
Beam Angle	120°	120°	120°	120°	120°	120°	120°	120°	120°	120°	120°	120°	120°	120°	120°	120°	120°	120°	120°	120°	120°	120°	120°
Color	3000K/ 4000K/ 5000K/ 6000K	3000K/ 4000K/ 5000K/ 6000K	3000K/ 4000K/ 5000K/ 6000K	3000K/ 4000K/ 5000K/ 6000K	3000K/ 4000K/ 5000K/ 6000K	3000K/ 4000K/ 5000K/ 6000K	3000K/ 4000K/ 5000K/ 6000K	3000K/ 4000K/ 5000K/ 6000K	3000K/ 4000K/ 5000K/ 6000K	3000K/ 4000K/ 5000K/ 6000K	3000K/ 4000K/ 5000K/ 6000K	3000K/ 4000K/ 5000K/ 6000K	3000K/ 4000K/ 5000K/ 6000K	3000K/ 4000K/ 5000K/ 6000K	3000K/ 4000K/ 5000K/ 6000K	3000K/ 4000K/ 5000K/ 6000K	3000K/ 4000K/ 5000K/ 6000K	3000K/ 4000K/ 5000K/ 6000K	3000K/ 4000K/ 5000K/ 6000K	3000K/ 4000K/ 5000K/ 6000K	3000K/ 4000K/ 5000K/ 6000K	3000K/ 4000K/ 5000K/ 6000K	3000K/ 4000K/ 5000K/ 6000K
IP Rating	IP65	IP65	IP65	IP65	IP65	IP65	IP65	IP65	IP65	IP65	IP65	IP65	IP65	IP65	IP65	IP65	IP65	IP65	IP65	IP65	IP65	IP65	IP65
PIR Sensor	Available	Available	Available	Available	Available	Available	Available	Available	Available	Available	Available	Available	Available	Available	Available	Available	Available	Available	Available	Available	Available	Available	Available
Photocell Controller	Available	Available	Available	Available	Available	Available	Available	Available	Available	Available	Available	Available	Available	Available	Available	Available	Available	Available	Available	Available	Available	Available	Available
Timer Controller	Available	Available	Available	Available	Available	Available	Available	Available	Available	Available	Available	Available	Available	Available	Available	Available	Available	Available	Available	Available	Available	Available	Available
Packing Dimension (mm)	1PC 435*265*110	1PC 460*350*150	1PC 460*350*150	1PC 550*420*150	1PC 720*400*220	1PC 1060*400*200	1PC 1060*400*200	1PC 1300*400*200	1PC 1300*400*200	1PC 1320*500*200	1PC 1320*500*200	1PC 1320*500*200	1PC 1320*500*200	1PC 1320*500*200	1PC 1320*500*200	1PC 550*400*150	1PC 550*400*150	1PC 650*400*150	1PC 1320*400*200	1PC 1320*400*200	1PC 1320*500*200	1PC 1320*500*200	1PC 1320*500*200
NW/GW (Kg)	1PC 3.5/4.0	1PC 3.5/4.0	1PC 3.5/4.0	1PC 6.0/7.0	1PC 8.0/9.0	1PC 13.5/15.0	1PC 13.5/15.0	1PC 16.2/18.0	1PC 16.2/18.0	1PC 16.2/18.0	1PC 21.0/24.0	1PC 21.0/24.0	1PC 21.0/24.0	1PC 21.0/24.0	1PC 6.0/7.0	1PC 6.0/7.0	1PC 6.0/7.0	1PC 16.2/18.0	1PC 16.2/18.0	1PC 21.0/24.0	1PC 21.0/24.0	1PC 21.0/24.0	1PC 21.0/24.0